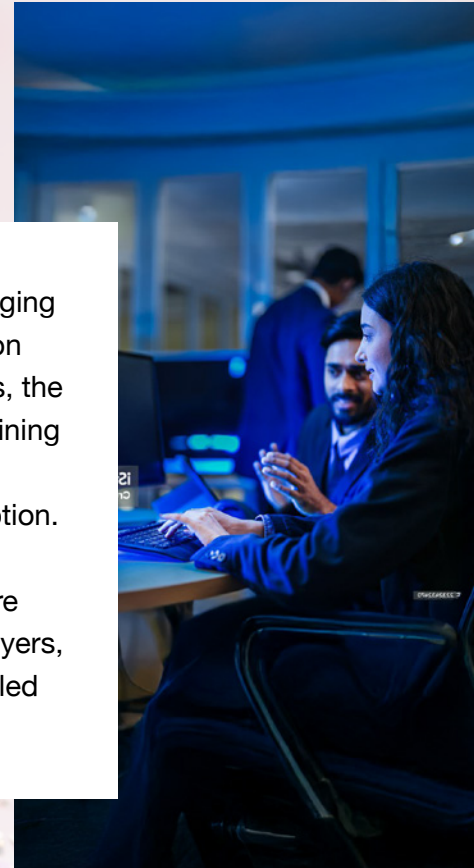


Inclusive AI Adoption

Research, Case Studies and Workforce Skills Development Programs

Artificial intelligence (AI), from machine learning and automation to natural language processing and generative tools, is reshaping businesses and driving innovation. Yet, adoption remains uneven, particularly among small and medium-sized enterprises (SMEs) facing financial, technical and human resource constraints.

Businesses need workers with skills ranging from baseline literacy to applied adoption and advanced expertise. To support this, the Diversity Institute and partners offer training programs — ADaPT, Skills Bridge, and others — to create pathways to AI adoption. Our research highlights where Canada stands on AI adoption and what skills are needed to prepare policymakers, employers, entrepreneurs and SMEs for an AI-enabled economy.



Our work is grounded in research

Our research about AI in the workplace looks at rates, barriers and opportunities of AI adoption. We also provide analysis about AI reshaping jobs and the skills needed to remain globally competitive. Our research can support policymakers to develop evidence-based AI adoption strategies while also helping employers, SMEs, entrepreneurs, and workers to participate fully in an AI-enabled economy.



Artificial Intelligence at Work



Bridging the AI Skills Gap in Small and Medium-Sized Organizations in Canada



Artificial Intelligence in Action for Small and Medium- Sized Enterprises

